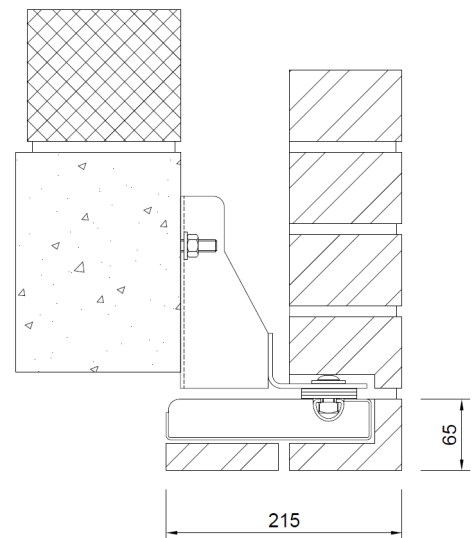
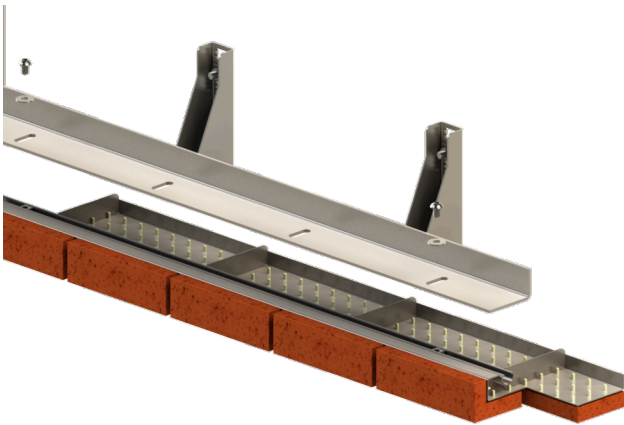


Pro-Steel soffit bolt ups are lightweight, brick faced, prefabricated units that are manufactured offsite and supplied to projects with brick slips resin bonded to the surface of the stainless steel carrier units. These units can be quickly and easily mechanically fixed to the slots provided in the masonry support systems to create various hanging brick soffit details in a wide range of brickwork bond patterns.

215 x 65mm Stretcher Pro-Steel Bolt Up

Courses in with facing brickwork and provides continuity between the stretcher/running bond pattern as it returns to the soffit on the underside of the reveal return. Adjacent soffit units are designed to interlock together providing seamless continuity of the brick bond once pointed. Depending on the availability of special brick types in the specified product, we can offer further advice on alternative designs and bonding arrangements.



102 x 65mm Header Pro-Steel bolt up

The double header pattern provides an option to standard stretcher bond with the bed pistol header returning the full width of the soffit with no requirement for any interlock. Depending on the choice of facing brick, its bed face finish and the availability of faced on bed special bricks, we can offer further advice on alternative designs and bonding arrangements.

